

MASTERS 2025 TOURNAMENT HANDBOOK CUP



netball
TASMANIA

INDEX

Competition Details	Page 1
Overview	Page 2
Conditions	Page 2
Structure	Page 3
Fixture & Results	Page 4
Additional Information	Page 5

Details

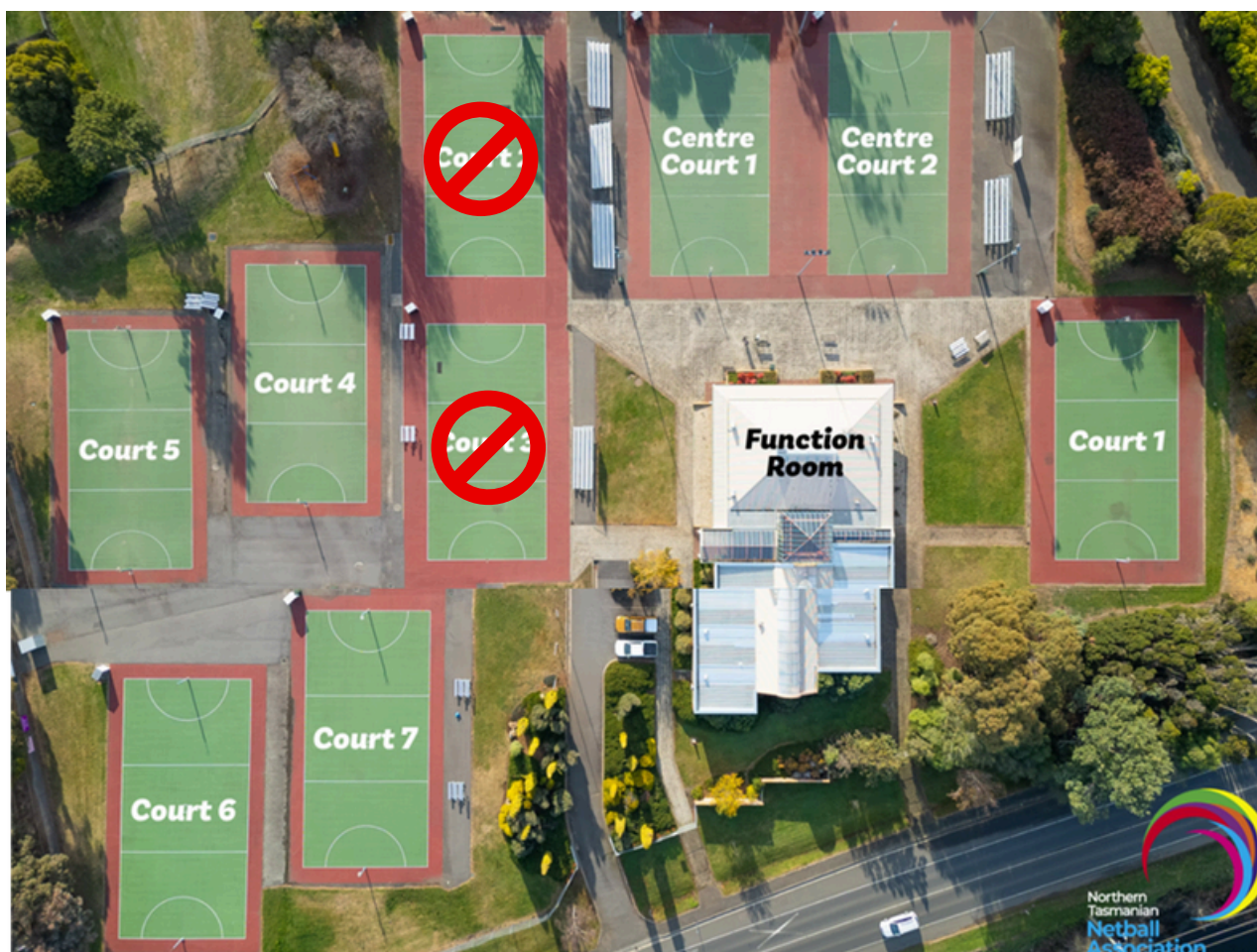
LOCATION: NTNA Launceston

DATES: 15th-16th November

ELIGIBILITY: All Players over 35+

DIVISIONS: A – Competitive, B– Social

Divisions will be confirmed based on final team registrations



Overview

The Masters Cup provides players aged 35+ with a fun, competitive, and inclusive netball experience that celebrates participation at all levels.

The tournament offers opportunities for both highly competitive athletes and those who simply want to enjoy the game socially, while fostering community connection, promoting healthy and active lifestyles, and showcasing netball as a sport for all ages.

Conditions

Per Participant	\$80
Netball Tas Membership Fee (3-month membership)	\$41.81
Netball Australia Fee	\$4.49

DISCLAIMER

The cost is a flat \$80 for the two-day event for current Netball Tasmania members. If you are not already a member, you will need to take out a membership to ensure you are covered by insurance.

Structure

RULES

Competition matches will be played according to the World Netball Rules of Netball 2024 edition, except where specified below.

GAME FORMAT

Games will consist of 4x 10-minute quarters, with 2-minute breaks. Matches will be centrally timed.

Each team **MUST** supply a scorer for all matches, scoring will be via iPads through PlayHQ provided by Netball Tas.

WIN	LOSS	DRAW	FORFEIT	BYE	ABANDONED
2	0	1	2	0	1*

*if a game is abandoned prior to half time – 1 point each team

*if a game is abandoned at or after half time – result as per the score.

Fixtures & Results

FIXTURES

Fixtures will be available on PlayHQ.

RESULTS & LADDERS

Results and ladders will be updated following each round. Results and ladders will not be official until they have been checked and verified after each competition days of play.

Please note further changes could be made by Netball Tas after the conclusion of the competition.

EXTRA TIME

In the event of a draw in a game that requires a winner, teams will have a 1-minute break and then will play until either.

- One team leads by 2 goals, in which case the game ends and they are declared the winner, or
- 4 minutes elapses, in which case the game will end as soon as a team leads by 1 goal.

ROLLING SUBSTITUTIONS

Rolling substitutions will be permitted as per the following conditions.

- Substitutions may take place at any time, without needing to stop play or inform the umpire
- Substitutions take place off court, close to the transverse line which is closest to that team's bench area – the player coming off must leave the court before the substitute enters.
- Player should not go offside while making substitutions.

SPECTATOR BEHAVIOUR

All associations, clubs and teams are responsible for the conduct of their spectators. Inappropriate or unsportsmanlike behaviour will not be tolerated.

CODE OF CONDUCT

All participants, officials, and spectators must follow Netball Tasmania's Code of Conduct. These apply both on and off the court.

Breaches may result in disciplinary action, including removal from the venue or event disqualification. Policies, Guidelines and Insurance – Netball TAS

NETBALL TASMANIA RESPONSIBILITIES

- First Aid on site
- Umpire allocations
- Match day information and match manager
- iPads for PlayHQ eScoring
- Match balls – match balls will be marked and left on the score bench at each court and must be returned to the score bench at the conclusion of each match.

SCORERS

Each team is responsible for providing a scorer for each match, they will sit along side the opposing scorer on the score bench for the duration of the match. Instructions will be available to assist with inexperienced scorers.

FORFEITS

If a team forfeits, they must notify the competition contact as soon as possible, the forfeiting team will receive 0 competition points and 0 goals for the game, the opposing team will receive 2 competition points and 10 goals.

APPEALS

Umpires control the matches according to the Rules. Their decisions are final and are given without appeal. No consideration will be given by competition organisers to overruling an umpire's decision made during a match.

For matters relating to competition conditions, queries should be directed to the competition contact.

INJURIES

In the event of an injury, please see our First aid on site, we have St John they will be available to assist where needed.

MATCH DAY MANAGERS

We will have fully trained match day managers; they will keep the day running on time and ensure umpires are at each game.

CANTEEN

The canteen and coffee van will be available each day.

ACCOMODATION

Netball Tas have discount voucher codes for accommodation options, please use these to support the local community. Find the Netball Tasmania [rates here.](#)