



# RACTI STATE LEAGUE 2020 SEASON BOOKLET



INSURANCE by **RACT**

# CONTACT

Blundstone Arena  
15 Derwent Street  
Bellerive, 7018

PO Box 405  
Rosny, Tas, 7018

[www.tas.netball.com.au](http://www.tas.netball.com.au)  
[enquiries@tasnetball.org.au](mailto:enquiries@tasnetball.org.au)  
Ph 03 6282 1824

Incorporated in Tasmania 02080C  
ABN 62 028 131 759

## 2020 RACTI STATE LEAGUE

RACT Insurance are proud to announce they will continue to be the Netball Tasmania State League Sponsor for the upcoming 2020 season.

Netball has long been one of Tasmania's most popular women's sports, bringing our communities together in a competitive and engaging environment. As one of Tasmania's leading and only locally based insurers, RACT Insurance get to see first-hand how sport can unite our communities.

2019 was a massive season and we are anticipating 2020 to be even bigger. Netball has the longest running State league of any sport in Tasmania and we are looking forward to seeing our state's finest battle it out again this year.

On behalf of everyone at RACT Insurance, I would like to wish the players and everyone involved the best of luck for the 2020 RACT Insurance League Tournament.

Trent Sayers, Chief Executive Officer



# AYC-FRIENDS TOYOTA ARROWS



## Season preview

Our 19/u have welcomed 5 new players to the team for 2020 to compliment the 6 players returning from the previous year's team. Everyone has been working hard in pre-season, with a goal of having a successful year, including finals appearances.

Familiar faces returning, Marahn, Molly, Holly, Ella and Bridget, will continue to build on their strengths and with new comers Asha, Ava, Georgia, Kayla and Isabelle adding extra flexibility and versatility to the team.

Hayley Sansom and Sonja Fletcher have taken the coaching reigns for the year ahead and are both looking forward to working with the players to support their development. Our coaches believe that a strong alignment to the Opens Arrows Team throughout the year will be very important to our success in 2020.

Lexus Arrows open side remains somewhat unchanged from the 2019 line up, with our familiar faces, Sophie Gunn, Hayley Sansom, Kate Marr, Zoe Gough, Tiena Meaclem committing to another season. This, along with promotion of Alana Cooper from our 19U program, and with the additions of Clair Jones, Elise Barwick and Charlie Wheller provides a great deal of depth and diversity in the playing group.

Our focus this year will be on consistency and accountability. Continuing to build on the successes of previous years, we will also be looking to give some of our younger players opportunities to be involved in the playing group both on and off the court.

Bringing new players into an existing team can be challenging at times, it's a challenge that the 2020 playing group is looking forward to.

With a pre-season focussed around fitness and mental strength, and of course on court ball work. Arrows are primed for the 2020 season, and will be hitting the court at full strength come Round One.





**HAYLEY SANSOM**  
19U Head Co-Coach



**SONJA FLETCHER**  
19U Head Co-Coach



**LYNNE SAYER**  
19U Team Manager



**MATTHEW CHARLESWORTH**  
Open Head Coach



**PETER BROCKMAN**  
Open Assistant Coach



**KATE PRINS**  
Apprentice Coach



**JOY COSTELLOE**  
Open Team Manager

## Club details



### Club details

Team Major Sponsor	Toyota
Home Venue	HNSC
Club Email	aycnetball.secretary@gmail.com
Club Website	aycnetball.org
Club Facebook	AYC Netball Club
Primary Carer	Jane Brooks & Cherrie Phillips
Club Liaison Contact	Yvonne Jackson
Club Liaison Contact Phone	0407 296 291
Club Liaison Contact Email	jeffandyvonnejackson@gmail.com



**TOYOTA**





**MARAAHN AITKEN**

DOB 24/07/2002  
Height 171 cm  
Positions GA, GS, WA



**BRIDGET HAYDON**

DOB 01/02/2001  
Height 176 cm  
Positions GD, GK, WD



**ISABELLE BURDEN**

DOB 11/02/2002  
Height 166 cm  
Positions C, WA, WD  
State Representative



**HOLLY MCCONNON**

DOB 16/07/2002  
Height 170 cm  
Positions WA, GA, C



**AVA CHARLESWORTH**

DOB 20/02/2003  
Height 171 cm  
Positions GS, GA, WA



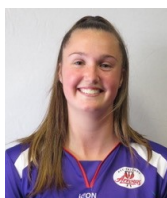
**KAYLA MCKEOWN**

DOB 16/11/2001  
Height 171 cm  
Positions C, WA, WD



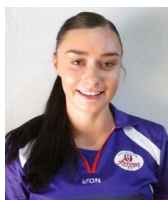
**ELLA COONEY**

DOB 31/08/2003  
Height 168 cm  
Positions WD, C, GD  
State Representative



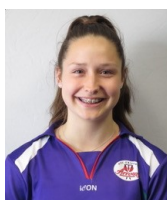
**GEORGIA PYKE**

DOB 01/05/2004  
Height 182 cm  
Positions GD, GK  
State Representative



**MOLLY-LEE DWYER**

DOB 07/09/2002  
Height 178 cm  
Positions GS, GA



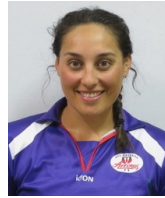
**ASHA RATCLIFFE**

DOB 11/12/2002  
Height 175 cm  
Positions C, WD, GD



**ELISE BARWICK**

DOB 31/03/1999  
Height 170 cm  
Positions C, WA, WD  
State Representative



**TIËNA MEACLEM**

DOB 23/07/1997  
Height 172 cm  
Positions WD, GD, C



**ALANNA COOPER**

DOB 30/01/2001  
Height 178 cm  
Positions GD, GK, WD  
State Representative



**KATE MARR**

DOB 17/06/1991  
Height 177 cm  
Positions WD, GD, C  
ANL Representative  
State Representative



**ZOE GOUGH**

DOB 18/11/1995  
Height 180 cm  
Positions GK, GD



**HAYLEY SANSOM**

DOB 24/03/1992  
Height 179 cm  
Positions WA, GA, GS  
ANL Representative  
State Representative



**SOPHIE GUNN**

DOB 11/10/1993  
Height 189 cm  
Positions GS  
ANL Representative  
State Representative



**CHARLOTTE WHELLER**

DOB 25/07/2002  
Height 176 cm  
Positions C, WA, WD  
State Representative



**CLAIR JONES**

DOB 06/10/1990  
Height 174 cm  
Positions GS, GA, GK

# F45 CAVALIERS



## Season preview

After a successful 2019 season where Cavaliers 19s secured back-to-back premierships, they are looking to attempt a three-peat in season 2020.

There is a new combination to the coaching and playing group this season including 2019 premiership assistant coach, Jamie Easter, taking on the 19s Head Coach role. She will be supported by former Cavs Opens premiership winning captain and current EDS coach Katie O'Neill as the Assistant Coach for 2020. Both coaches are involved with state level teams. Jamie is assistant coach for the U17s and Katie is the apprentice coach for the 19s in the upcoming National Championships.

Returning to the 19s playing group are goalies Dani Laughner and Courtney Treloar. Their experience through 17s and 19s state programs will be well supported by rookies Hannah Crawford and Olive Morris. Both newcomers have transitioned through the Cavaliers Development Academy and 15s state pathway and have also been selected in the 17s state team this year.

The midcourt will see the combination of Hayley Older, Jess Upton-Greer and Annabelle Sanders. Annabelle looks to put her best foot forward after a strong pre-season and debuting last season, while Hayley and Jess will continue to tear teams apart with their speed and agility.

Our premiership winning defensive unit in Tahlia Randall, Montana Viney and Monique Dufty all return to the side. The experience of this defensive outfit will take the whole team to a new level in 2020.

This entire dynamic will prove to be remarkably ruthless in contesting and turning over the ball.

This side has a balance of experience and emerging talent to continue ongoing success for Cavaliers. Following a successful 2019 season the Cavaliers Opens and defending champions find themselves with an entirely new look defensive end. With the loss of key defenders Rachael Tempo, Issy Maskell and Kate McLaughlin the Cavs Opens find themselves searching for a new defensive combination to succeed in 2020. Dana Lester, Shannae Heazlewood and the return of former Cavs player Estelle Margetts are keen to prove they can be a formidable defensive force this season.

The attack end has been bolstered with the addition of key goalies Hayley McDougall and Zoe Claridge. They join the successful duo of Mel Philpott and Deanna Wadley. Coaches Dan Roden and Anita Batty believe the versatility of such quality players through the goal circle will be paramount with the introduction of the rolling substitute rule.

The mid court sees the return of Shelby Miller and Lucy Dennis with newcomer Piper Sanders elevated from the 19s. A balance of youth and experience will once again allow the Cavs to execute their game plan of fast ball movement, speed on transition and dogged one-on-one defence.

The Cavaliers as a club are looking to develop connections and combinations of experience and youth to ensure the club remains strong in both the 19s and the Opens for season 2020 and beyond!



**JAMIE EASTHER**  
19/U Head Coach



**KATIE O'NEIL**  
19/U Assistant Coach



**ELIZABETH HAWLEY**  
19/U Team Manager



**DAN RODEN**  
Open Head Coach



**ANITA BATTY**  
Open Assistant Coach



**CARMEL MCGEE**  
Open Team Manager

## Club Details



### Club details

Team Major Sponsor	F45
Home Venue	Silverdome
Club Email	secretary@cavaliers.org.au
Club Website	www.cavaliers.org.au
Club Facebook	Cavaliers Netball
Primary Carer	Brittany Brown
Club Liaison Contact	Caroline Morris
Club Liaison Contact Phone	0408 910 195
Club Liaison Contact Email	secretary@cavaliers.org.au





**HANNAH CRAWFORD**

DOB 29/02/2004  
Height 170 cm  
Positions GA, WA, C  
State Representative



**TAHLIA RANDALL**

DOB 11/02/2003  
Height 175 cm  
Positions GD, GK  
State Representative



**MONIQUE DUFTY**

DOB 24/04/2003  
Height 185 cm  
Positions GK  
State Representative



**ANNABELLE SANDERS**

DOB 03/05/2003  
Height 165 cm  
Positions WA, C  
State Representative



**DANIELLE LAUGHER**

DOB 13/01/2002  
Height 183 cm  
Positions GA, WA  
State Representative



**COURTNEY TRELOAR**

DOB 10/07/2001  
Height 186 cm  
Positions GS, GA  
State Representative



**OLIVE MORRIS**

DOB 17/02/2004  
Height 184 cm  
Positions GS, GA  
State Representative



**JESSICA UPTON-GREER**

DOB 03/12/2001  
Height 167 cm  
Positions WA, C, WD



**HAYLEY OLDER**

DOB 17/05/2002  
Height 165 cm  
Positions WA, C, WD  
State Representative



**MONTANNA VINEY**

DOB 21/04/2002  
Height 178 cm  
Positions GD, GK  
State Representative





**ZOE CLARIDGE**

DOB 19/07/1995  
Height 174 cm  
Positions GA, WA  
ANL Representative  
State Representative



**HAYLEY MCDUGALL**

DOB 17/04/2001  
Height 190 cm  
Positions GS, GA  
State Representative



**LUCY DENNIS**

DOB 03/08/1993  
Height 169 cm  
Positions WA, C, WD  
State Representative



**SHELBY MILLER**

DOB 6/06/1997  
Height 170 cm  
Positions WA, C, WD  
ANL Representative



**SHANNAE HEAZLEWOOD**

DOB 08/06/1999  
Height 176 cm  
Positions C, WD, GD  
State Representative



**MELODY PHILPOTT**

DOB 06/10/1995  
Height 187 cm  
Positions GS



**DANA LESTER**

DOB 27/09/1997  
Height 175 cm  
Positions C, WD, GD  
ANL Representative  
State Representative



**PIPER SANDERS**

DOB 02/03/2001  
Height 175 cm  
Positions WA, C  
State Representative



**ESTELLE MARGETTS**

DOB 26/03/1994  
Height 182 cm  
Positions WA, GD, GK  
ANL Representative  
State Representative



**DEANNA WADLEY**

DOB 22/11/1997  
Height 178 cm  
Positions GS, GA  
State Representative



# CRIPPS WARATAH

## Season preview

The Cripps Waratah 19U and Open Teams are looking forward to commencing their 2020 campaign and making a mark on the competition.

Our 19U Team sees three athletes return with the remainder of the team made up of new faces. The majority of these athletes have progressed through our Club's Junior Pathway and we welcome them to their first year of State League competition.

Emily Schueler, Jessica Byers and Ella Marsh return for the 2020 season and will offer experience and strength across the court. They are joined by Hannah Vinen and Jess Scott who saw plenty of court time off the bench in our successful 2019 season. Experiencing their first year of State League are Ash Turner and Sophie Pidgeon in goals, Anita Eberstein, centre court and goals, Chanelle Byers, centre court and Alexia Smith in defence. The team have been working hard throughout pre-season and are keen to hit the court and are looking for success.

The 2020 Cripps Waratah Opens playing group remains relatively unchanged and are looking forward to consolidate and grow on the back of a solid 2019 season. We welcome Katia Howell and Hannah Navickas who have stepped up from our 2019 19U Team.

Katia will join Megan Harper as a playmaker and together with the height of Lauren Thornbury in goals will give a variety of options in the circle and our attack end. Experienced players Sophie Navickas and Ash Probert-Hill are combining well with Lillian Wing and another season together will show them to be a strong presence both attacking and defensively through the court.

Olivia French, Alex Vinen, and Lily Banks combined well last year as a defensive unit and will be joined by Hannah Navickas giving more depth and variety in defence.

2020 Season sees a change in Cripps Waratah coaching staff. Rosalie Navickas will return to the State League Opens Coaching position after a break and is looking forward to continuing the development of this young side and for a top four finish. She will be assisted by Helen Pullen who has worked with our 19U Team for several years and Chris Webb who as Apprentice Coach is keen to learn and experience netball at State League level. Sophia Cole returns to State League as Coach of the 19U Team and together with Alex Vinen as Assistant Coach is looking forward to continuing the successful development and transition of our Cripps Waratah players from our Club's Junior Pathway to State League Netball.

**SOPHIA COLE**

19/U Head Coach

**ALEX VINEN**

19/U Assistant Coach

**SHARON BYERS**

19/U Team Manager

**ROSALIE NAVICKAS**

Open Head Coach

**HELEN PULLEN**

Open Assistant Coach

**CHRIS WEBB**

Apprentice Coach

**SARNIA SYMONS**

Open Team Manager

## Club details



### Club details

Team Major Sponsor	Cripps Nu Bake
Home Venue	HNSC
Club Email	crippssecretary@gmail.com
Club Website	crippswaratahnetball.org.au
Club Facebook	Cripps Waratah
Primary Carer	Rebecca Strong
Club Liaison Contact	Maree Langford
Club Liaison Contact Phone	0400 059 163
Club Liaison Contact Email	crippswaratah-statelague@gmail.com





**CHANNELLE BYERS**

DOB 13/08/2004  
Height 173 cm  
Positions WD, C, WA  
State Representative



**EMILY SCHUELER**

DOB 25/10/2001  
Height 173 cm  
Positions WD, GD



**JESSICA BYERS**

DOB 24/8/2002  
Height 172 cm  
Positions GA, WA  
State Representative



**JESSICA SCOTT**

DOB 06/07/2004  
Height 172 cm  
Positions WD, C, WA  
State Representative



**ANITA EBERSTEIN**

DOB 17/06/2004  
Height 174 cm  
Positions GA, WA, C  
State Representative



**ALEXIA SMITH**

DOB 16/04/2004  
Height 177 cm  
Positions GD, WD  
State Representative



**ELLA MARSH**

DOB 25/3/2003  
Height 175 cm  
Positions WD, C, WA  
State Representative



**ASHLEA TURNER**

DOB 01/02/2004  
Height 177 cm  
Positions GS, GA  
State Representative



**SOPHIE PIDGEON**

DOB 17/09/2004  
Height 179 cm  
Positions GS, GA  
State Representative



**HANNAH VINEN**

DOB 04/04/2002  
Height 176 cm  
Positions WD, GK



**LILY BANKS**

DOB 29/7/1999  
Height 179 cm  
Positions WD, GD, GK



**SOPHIE NAVICKAS**

DOB 15/12/1997  
Height 174 cm  
Positions GA, C, WD



**OLIVIA FRENCH**

DOB 24/01/1995  
Height 179 cm  
Positions WD, GD, GK



**ASHLEIGH PROBERT-HILL**

DOB 01/01/2000  
Height 174 cm  
Positions GA, WA, C  
ANL Representative  
State Representative



**MEGAN HARPER**

DOB 16/8/1998  
Height 171 cm  
Positions GS, GA, WA



**LAUREN THORNBURY**

DOB 03/06/1999  
Height 180 cm  
Positions GS, GK



**KATIA HOWELL**

DOB 24/11/2001  
Height 172 cm  
Positions GS, GA



**ALEX VINEN**

DOB 29/03/1999  
Height 181 cm  
Positions GD, GK  
ANL Representative  
State Representative



**HANNAH NAVICKAS**

DOB 11/12/2001  
Height 180 cm  
Positions WD, GD, GK  
State Representative



**LILLIAN WING**

DOB 18/4/2001  
Height 179 cm  
Positions WA, C  
State Representative

# MOTORS BURNIE HONDA DEVON



## Season preview

Devon will begin 2020 with a new name. This year will see Devon extend their relationship with Motors and will partner to promote Honda as their Major sponsor. This year we will be known as Motors Burnie Honda Devon.

The Club is thrilled to retain our 2019 Open Head Coach – Darren Briggs and 19U Head Coach – Kara Blizzard. Both coaches are looking forward to the challenges of 2020. With a very young inexperienced group of players, they are excited about the challenge to develop this group into the future strength of Devon.

The Open team retained Madalyn Harris and Emily Miles and will look to these two to provide leadership to Grace Close, Jordi Smith, Joey Revell and Eloise Piper as they take the huge step from 19U to Open Players.

The inclusion of Maddisison Lockett and Kristelle Robinson will provide some much needed experience as both make a return to TNL after extended breaks.

The 19 and Unders only retain one player from 2019, Riley Evans. Riley will be joined by the young talent that is coming through. After a very successful 2019 as 15U players - winning 3 out of 4 Carnivals – Gemma Collyer, Makenzie Tyrrell, Grace Maggs, Felicity Elmer and Sophie Grave will take the leap and push their abilities to the next level. With the addition of Burnie representative in Macy Goninon, Lana Viney and Elise Popowski this team will be an unknown surprise. Joining this team for her first experience at this level will be the very young Madison Dove. Madison has shown great promise to be a very special player.

What Devon lacks in experience for 2020 they make up for with skills and enthusiasm which will bring exciting times.



**KARA BLIZZARD**

19/U Head Coach

**DARREN BRIGGS**

Opens Head Coach

## Club details



### Club details

Team Major Sponsor	Motors Burnie Honda
Home Venue	Nazareth Gymnasium St Brendan Shaw College
Club Email	admin@devonnetball. com.au
Club Website	www.devon.tas.netball. com.au
Club Facebook	devon.netball
Club Liaison Contact Email	admin@devonnetball. com.au

**HONDA**



**GEMMA COLLYER**

DOB 26/03/2004  
Height 182 cm  
Positions GA, WD, GD



**SOPHIE GRAVE**

DOB 20/01/2004  
Height 176 cm  
Positions WD, GD, GK



**MADISON DOVE**

DOB 09/12/2005  
Height 173 cm  
Positions GS, GA, WA



**GRACE MAGGS**

DOB 21/07/2004  
Height 170 cm  
Positions WA, C, WD



**FELICITY ELMER**

DOB 05/06/2004  
Height 165 cm  
Positions WA, C



**ELISE POPOWSKI**

DOB 25/02/2004  
Height 170 cm  
Positions WA, C, WD



**RILEY EVANS**

DOB 31/12/2002  
Height 165 cm  
Positions WA, C, WD



**MAKENZIE TYRRELL**

DOB 30/05/2004  
Height 180 cm  
Positions WD, GD, GK



**MACY GONINON**

DOB 26/01/2003  
Height 174 cm  
Positions WA, C  
State Representative



**LANA VINEY**

DOB 26/05/2003  
Height 178 cm  
Positions GS, GA  
State Representative



**GRACE CLOSE**

DOB 10/07/2002  
Height 179 cm  
Positions GS, GA



**ELOISE PIPER**

DOB 28/10/2003  
Height 177 cm  
Positions WD, GD, GK



**MADALYN HARRIS**

DOB 06/07/1999  
Height 179 cm  
Positions GA, C, GD  
State Representative



**JOHERTY REVELL**

DOB 25/06/2002  
Height 178 cm  
Positions GS, GA, WA



**MADDISSON LOCKETT**

DOB 08/03/1996  
Height 173 cm  
Positions GS, GA, WA  
State Representative



**JORDI SMITH**

DOB 15/06/2002  
Height 180 cm  
Positions GS, GA, GD



**EMILY MILES**

DOB 22/07/1995  
Height 175 cm  
Positions WD, GD, GK  
State Representative



**KRISTELLE ROBINSON**

DOB 29/04/1992  
Height 166 cm  
Positions C, WD



# ST.LUKESHEALTH KARANA

## Season preview

The 2020 St.LukesHealth Karana Open team is looking forward to a fresh start with only four athletes returning from last year. The promotion of three 19/U athletes creates a blend of youth and experience which will hold the team in good stead.

A variety of pre-season initiatives and the welcome addition of Assistant Coach Karen Leonard should lead to significant development across the squad.

The KPI's that we establish for the season will be realistic, achievable with an aim to improve on 2019. Our focus for 2020 is to be competitive, fierce and united and I am sure the group is more than capable of achieving this vision.

From a Coach's perspective I will strive to ensure that all athletes are given consistent opportunity to development. The introduction of "Rolling Subs" trial should allow for all athletes to have an impact on game day.

Our 2020 team may lack years of experience in an Open State League competition but will not be short on endeavour, commitment and courage.

St.LukesHealth Karana 19&U team is looking forward to a year of development and success.

A combination of athletes new to the team, along with experience from previous years, we hope will see the team better the 5th place finish in 2019.

They team have worked hard during pre-season, improving their fitness and skills while developing their relationships with one another. Each member is committed to working hard to ensure they achieve their best on and off the court.

Head coach Anna Di Carlo, welcomes the return of Clare Bush as her assistant, after a break from coaching.

The coaches are looking forward to giving their players the opportunity to build their netball skills and knowledge and achieve their goals.

St.LukesHealth Karana Flames playing group are excited about the challenges of 2020.

Go Flames!



**ANNA DI CARLO**  
19/U Head Coach



**CLARE BUSH**  
19/U Assistant Coach



**SUZANNE WALKER**  
19/U Team Manager



**LOU CARTER**  
Open Head Coach



**KAREN LEONARD**  
Open Assistant Coach



**CASEY OATES**  
Open Team Manager

## Club details



### Club details

Team Major Sponsor	St.LukesHealth
Home Venue	N/A
Club Email	karanaflames@gmail.com
Club Website	www.karanaflames.org.au
Club Facebook	St.LukesHealth Karana
Primary Carer	TBA
Club Liaison Contact	Patricia Di Carlo
Club Liaison Contact Phone	0409 658 209
Club Liaison Contact Email	karanaflames@gmail.com

  
**stlukeshhealth**





**KENITA AITKEN**

DOB 10/12/2004  
Height 173 cm  
Positions C, WD, GD



**MEGAN STEELE**

DOB 11/11/2003  
Height 168 cm  
Positions WA, C, WD  
State Representative



**TALIA ATKINSON**

DOB 19/04/2004  
Height 173 cm  
Positions GS, GA, WA



**CHELSEA THOMAS**

DOB 22/04/2003  
Height 170 cm  
Positions WA, C, WD



**RENEE EISZELE**

DOB 08/01/2003  
Height 170 cm  
Positions GA, WA, C



**ABBAY WILLIAMS**

DOB 22/10/2001  
Height 181 cm  
Positions GS, GK



**OLIVIA FERGUSON**

DOB 14/05/2001  
Height 180 cm  
Positions GS, GD, GK  
State Representative



**CLAUDIA WILLIAMS**

DOB 05/03/2002  
Height 181 cm  
Positions WD, GD, GK



**ALYSSA MUSTCHIN**

DOB 27/08/2003  
Height 178 cm  
Positions WD, GD, GK





**LUCY CLAPHAM**

DOB 27/07/2000  
Height 181 cm  
Positions GS, GA  
State Representative



**MACKENZIE QUEEN**

DOB 11/01/2001  
Height 174 cm  
Positions WD, GD, GK  
State Representative



**FELICIA DI CARLO**

DOB 22/11/2001  
Height 173 cm  
Positions WA, C, WD  
State Representative



**GRACE PULLEN**

DOB 15/04/2003  
Height 180 cm  
Positions GS, GA  
State Representative



**MADDI HAY**

DOB 12/02/2003  
Height 182 cm  
Positions GD, GK  
State Representative



**HANNAH STEINHAUSER**

DOB 01/04/2000  
Height 182 cm  
Positions GD, GK  
State Representative



**GRACE JACOBSON**

DOB 26/06/2001  
Height 170 cm  
Positions WA, C, WD



**GRACE WALKER**

DOB 10/10/2000  
Height 180 cm  
Positions GA, WA, C  
State Representative



**ZANNA JODLOWSKA**

DOB 02/05/1996  
Height 181 cm  
Positions C, WD, GD  
ANL Representative  
State Representative

# PRICELINE PHARMACY KINGSTON BLUES

## Season preview

Kingston Blues 19U team is an exciting blend of experienced players combined with many new faces to our 2020 team. The team has new athletes in each area of the court and will be aiming to develop strong combinations through pre-season allowing them to take the court with confidence and enjoy a strong season.

We have a fresh look to our attack end with Lucy Newton leading our shooting combination, that will include new members to our team in Bellah Parker and Maddsion Cordwell.

Our mid-court features the experience of Georgia Jones playing in her 4th Under 19 State League season. She will be combining with Jo Thompson, Matilda Payne and Amelia McMahon who will all be stepping up to State League following strong seasons in their Under 17 teams.

Our defence end will benefit from the experience of Merrin Cooper and Ellie Doyle who are in their second State League season. They will be joined by Brielle Gordon who has been selected into the 17U State Team for 2020.

This young team is full of potential and is looking forward to stepping on court in 2020.

2020 sees changes in the Blues Opens line up as the team again strives to move deeper into finals. Lucy Street and Jess Earney join the team's attacking combinations of Gemma Polley, Makenzie Adams, Greta Shelton and Lucy Bosker to provide a range of flexible and dynamic options from the centre court to shooting circle. The Blues defensive end also welcomes Brigitte Clack full time into the side alongside centre courter Sarah Scott and circle defence duo Bec Hyland and Emma Johns. Bri demonstrated her ability to compete against Opens best in 2019 and will be valuable in a defence end known for being able to create opportunities.

Bri, Jess and Lucy fill big shoes left by valued Club members Chelsea Coleman, Millie Von Stieglitz, Maddie Jones and Laura Elliott who step away from playing duties this year. Up for the challenge, these three are looking strong alongside their team mates as pre-season progresses.

On court, the team will be focussed on closing the gap on narrow losses to top 4 teams in 2019. Confident in the ability of the playing group, creating a strong team unit and executing great skill and strategy when the pressure is on, is key for the Blues coaching group this year.

We look forward to the challenge.

**LISA WHEELDON**

19/U Head Coach

**MIA ROWLAND**

19/U Assistant Coach

**MAREE JONES**

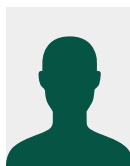
19/U Team Manager

**ERIN BAKER**

Opens Co-Coach

**SHANE FISH**

Opens Co-Coach

**WENDY SHELTON**

Opens Team Manager

## Club details



### Club details

Team Major Sponsor	Priceline Pharmacy
--------------------	--------------------

Home Venue	KSC
------------	-----

Club Email	kingstonbluesnetball@gmail.com
------------	--------------------------------

Club Website	www.kingstonblues.org.au
--------------	--------------------------

Club Facebook	Kingston Blues Netball Club
---------------	-----------------------------

Primary Carer	Ian McHugh
---------------	------------

Club Liaison Contact	Patsy Makarewicz
----------------------	------------------

Club Liaison Contact Phone	0409 198 883
----------------------------	--------------

Club Liaison Contact Email	stateleague@kingstonblues.org.au
----------------------------	----------------------------------





**MERRIN COOPER**

DOB 09/03/2001  
Height 176 cm  
Positions GD, GK, WD



**AMELIA MCMAHON**

DOB 15/07/2004  
Height 168 cm  
Positions WD, GA  
State Representative



**MADDI CORDWELL**

DOB 22/01/2003  
Height 164 cm  
Positions GA, GS



**LUCY NEWTON**

DOB 19/11/2002  
Height 175 cm  
Positions GA, GS



**ELLIE DOYLE**

DOB 29/12/2001  
Height 173 cm  
Positions GD, WD



**MATILDA PAYNE**

DOB 18/12/2002  
Height 171 cm  
Positions WA, C



**BRIELLE GORDON**

DOB 17/09/2003  
Height 170 cm  
Positions GD, WD, C  
State Representative



**BELLAH PARKER**

DOB 11/12/2005  
Height 173 cm  
Positions GA, GS



**GEORGIA JONES**

DOB 9/04/2001  
Height 167 cm  
Positions WA, C, WD  
State Representative



**JOSEPHINE THOMPSON**

DOB 04/08/2004  
Height 159 cm  
Positions C, WA



**MACKENZIE ADAMS**

DOB 18/10/1999  
Height 175 cm  
Positions GA, GS  
State Representative



**EMMA JOHNS**

DOB 17/04/1998  
Height 188 cm  
Positions GK, GD  
ANL representative  
State Representative



**LUCY BOSKER**

DOB 15/04/1995  
Height 171 cm  
Positions WA, GA  
State Representative



**GEMMA POLLEY**

DOB 2/12/1998  
Height 190 cm  
Positions GS, GK  
State Representative



**BRIGITTE CLACK**

DOB 19/10/2000  
Height 173 cm  
Positions WD, GD  
State Representative



**SARAH SCOTT**

DOB 21/11/1999  
Height 169 cm  
Positions WD, C, WA  
State Representative



**JESS EARNEY**

DOB 13/08/2002  
Height 177 cm  
Positions GA, GS  
State Representative



**GRETA SHELTON**

DOB 24/03/1998  
Height 168 cm  
Positions WA, C, WD  
State Representative



**REBECCA HYLAND**

DOB 12/08/1995  
Height 183 cm  
Positions GD, GK  
ANL representative  
State Representative



**LUCY STREET**

DOB 08/09/2000  
Height 169 cm  
Positions WA, GA  
State Representative

# KNIGHT FRANK NORTHERN HAWKS



## Season preview

A new era has set the scene for a new exciting time ahead for Knight Frank Northern Hawks highlighted with a change of naming sponsor and new standards set for future endeavours.

Time spent in pre-season laying down core values and future direction will be underpinning every step toward success this year.

Hawks Opens are ready for redemption in 2020. The Team has been motivated and supported by HIIT Launceston sessions with the results showing good progress on court.

Little change to the makeup of the open team gives Hawks a great deal of momentum as they embark on a new premiership campaign.

Hawks midcourt players Stephanie Walker, Jamie Symons and Lydia Coote will be instrumental in delivering consistent high quality play through the court in attack.

Clare McKimmie and Chelsea Mawer give Hawks flexibility in attack to connect with Danni Pickett and Ashlea Mawer in goals.

Hannah Lenthall following a strong year in 19U and experience in the National 17U Squad will join the defence unit alongside Gemma Poke and Tessa Coote.

This group of players know each other well and will be looking to build new structures to remain as a consistent finals contender. 19U Knight Frank Northern Hawks have made a great start over pre-season. They have shown a strong commitment to the team which will give them the confidence to take on the rigours of state league competition.

With only five returning players our 19Us are quickly gaining an understanding of how they need to work as a team to be successful on court.

Seasoned shooters Taylah Griffin and Kendall Jones are joined by Charlotte Lockwood who has the ability to make an impact in a versatile shooting outfit. A fresh new trio of young players Bonnie Pitt, Brielle Smith and Ebony Rainbow will have the benefit of Lauren Spencer's leadership and experience to develop into a creative midcourt unit.

Hawks defence team Gabbi Groves, Aleigha Gumley and Candice Archer will be looking to consolidate themselves as a new combination with each bringing something different to the game.

The challenge for this group is now to play with consistency and laying the foundation for continued growth as a cohesive team.



**KELLIE TAHIRI**

19/U Head Coach

**LYDIA COOTE**19/U Co-Assistant  
Coach**RACHEL OLIVER**19/U Co-Assistant  
Coach**ANN PEARCE**

19/U Team Manager

**KELLIE WOOLNOUGH**

Open Co-Coach

**RUTH TUOHY**

Open Co-Coach

**MICHELLE WOODIWISS**

Open Team Manager

## Club details



### Club details

Team Major Sponsor	Knight Frank Northern Hawks
Home Venue	Silverdome
Club Email	northern.hawks.secretary@gmail.com
Club Website	www.northern.hawks.com
Club Facebook	Northern Hawks Netball Club
Primary Carer	Zac Young
Club Liaison Contact	Kellie Tahiri
Club Liaison Contact Phone	0407 625 018
Club Liaison Contact Email	northern.hawks.secretary@gmail.com

**Knight  
Frank**



**NORTHERN  
HAWKS**



**NETBALL CLUB**



**CANDICE ARCHER**

DOB 27/02/2003  
Height 183 cm  
Positions GA, GD, GK



**CHARLOTTE LOCKWOOD**

DOB 21/06/2003  
Height 172 cm  
Positions GA, WA  
State Representative



**TAYLAH GRIFFIN**

DOB 15/02/2002  
Height 190 cm  
Positions GS, GA  
State Representative



**BONNIE PITT**

DOB 03/02/2003  
Height 170 cm  
Positions GA, WA, C  
State Representative



**GABBI GROVES**

DOB 28/01/2002  
Height 180 cm  
Positions GD, GK  
State Representative



**EBONY RAINBOW**

DOB 30/06/2005  
Height 165 cm  
Positions WA, C, WD



**ALEIGHA GUMLEY**

DOB 14/11/2002  
Height 172 cm  
Positions WD, GD, GK



**BRIELLE SMITH**

DOB 15/05/2004  
Height 164 cm  
Positions WA, C, WD



**KENDALL JONES**

DOB 15/03/2002  
Height 175 cm  
Positions GA, WA, C  
State Representative



**LAUREN SPENCER**

DOB 15/01/2002  
Height 172 cm  
Positions WA, C, WD



**LYDIA COOTE**

DOB 05/09/1997  
Height 174 cm  
Positions WA, C, WD



**CLARE MCKIMMIE**

DOB 10/11/1994  
Height 177 cm  
Positions GA, WA  
State Representative



**TESSA COOTE**

DOB 29/01/1995  
Height 176 cm  
Positions GD, GK  
State Representative



**DANNIELLE PICKETT**

DOB 13/01/1994  
Height 184 cm  
Positions GS, GA, WA  
ANL Representative  
State Representative



**HANNAH LENTHALL**

DOB 21/05/2002  
Height 179 cm  
Positions C, WD, GD  
State Representative



**GEMMA POKE**

DOB 14/07/1995  
Height 186 cm  
Positions WD, GD, GK  
State Representative



**CHELSEA MAWER**

DOB 11/08/1998  
Height 167 cm  
Positions WA, C, WD  
State Representative



**JAMIE SYMONS**

DOB 9/06/1999  
Height 169 cm  
Positions C, WD, GD  
State Representative



**ASHLEA MAWER**

DOB 4/12/1995  
Height 189 cm  
Positions GS  
State Representative



**STEPHANIE WALKER**

DOB 15/12/1993  
Height 170 cm  
Positions WA, C, WD

## 2020 VENUES

Venues	
HNSC	Hobart Netball and Sports Centre
S-DOME	Silverdome
KSC	Kingborough Sports Centre
SBSC	St Brendan Shaw College
SPC	St. Patrick's College
BBCS	Bendigo Bank Community Stadium
DCC	Deloraine Community Complex

## 2020 DATES

Events	
Season Launch	Saturday March 7th
National Championship	Saturday April 18th - Thursday 23rd
Semi - Finals	Saturday July 18th
Preliminary Finals	Saturday July 25th
Grand Final	Saturday August 1st
TNL Dinner (Launceston)	Saturday August 15th

## STAY CONNECTED

[@netball.tasmania](#)[@netballtas](#)

# 2020 STATE LEAGUE UMPIRE POOL

Name	Badge
James Adams	A
Monika Andersch	B
Zoe Bird	C
Eliza Bowen	C
Ann-Marie Brown	B
Jarrold Burton	C
Rebecca Clifton	B
Monique Cooley	B
Ray Donoghue	A
Hannah Donoghue	B
Michelle Foster	B
Lauren Gilmour	B
Rachael Goetzke	B
Tara Gregory	A
Aleigha Gumley	B
Brianna Hills	B

Name	Badge
Eloise Jones	C
Nadine Maggs	B
Libby Morman	B
Jason Nicholls	B
Isabella Pace	B
Kelsie Raspin	C
Emma Reader	B
Lily Spencer	B
Rachael Stebbings	A
Rebecca Strong	B
Andy Stuart	C
Jo Thompson	C
Leah Turnbull	A
Ella Warnes	C
Zoe Wickham	A

## 2019 RACTI LEAGUE AWARD



### 19 PREMIERS

Cavaliers



### 19U COACHES' MOST WANTED

Hannah Lenthall (Hawks)



### 19U COACH OF THE YEAR

Dannie Carstens (Cavs)



### NATASHA CHOKLJAT AWARD (19U B&F):

Hannah Lenthall (Hawks)

### 2019 19U ALL STARS

Courtney Treloar (Cavaliers), Taylah Griffin (Hawks), Kendall Jones (Cripps), Piper Sanders (Cavaliers), Hayley Older (Cavaliers), Hannah Lenthall (Hawks), Brigitte Clack (Kingston), Hannah Navickas (Cripps), Gabbi Groves (Hawks) and Maddi Hay (Karana).



## 2019 RACTI LEAGUE AWARD



### OPENS PREMIERS

Cavaliers



### OPEN COACHES' MOST WANTED

Ashlea Mawer (Hawks)



### OPEN COACH OF THE YEAR

Ruth Tuohy & Kellie  
Woolnough (Hawks)



### ROSALIE PARKES AWARD (OPENS B&F)

Hayley Sansom (Arrows)

### 2019 OPEN ALL STARS

Ashlea Mawer (Hawks), Kate Prins (Arrows), Zoe Claridge (Hawks), Hayley Sansom (Arrows), Shelby Miller (Cavaliers), Kate Marr (Arrows), Zanna Jodowska (Karana), Alex Vinen (Cripps), Rebecca Hyland (Kingston) and Zoe Gough (Arrows)

	DAY	MONTH	DATE	TIME	TIME	HOME	AWAY	VENUE
<b>1</b>	Saturday	March	7th	11:30 AM	1:00 PM	Arrows	Hawks	HNSC-1
	Saturday	March	7th	2:30 PM	4:00 PM	Kingston	Cavaliers	HNSC-2
	Saturday	March	7th	2:30 PM	4:00 PM	Cripps	Devon	HNSC-1
	Bye	Karana						
<b>2</b>	Sunday	March	8th	12:30 PM	2:00 PM	Kingston	Hawks	KSC-2
	Sunday	March	8th	12:30 PM	2:00 PM	Arrows	Cavaliers	KSC-2
	Sunday	March	8th	9:30 AM	11:00 AM	Karana	Devon	KSC-1
	Bye	Cripps						
<b>3</b>	Friday	March	13th	6:30 PM	8:00 PM	Kingston	Arrows	KSC-2
	Friday	March	13th	6:30 PM	8:00 PM	Karana	Cripps	KSC-1
	Friday	March	13th	6:30 PM	8:00 PM	Cavaliers	Hawks	S-DOME-1
	Bye	Devon						
<b>4</b>	Friday	March	20th	6:30 PM	8:00 PM	Arrows	Karana	KSC - 2
	Friday	March	20th	6:30 PM	8:00 PM	Cripps	Kingston	KSC - 1
	Saturday	March	21st	2:30 PM	4:00 PM	Devon	Cavaliers	SBSC
	Bye	Hawks						
<b>5</b>	Friday	March	27th	6:30 PM	8:00 PM	Arrows	Cripps	KSC-1
	Friday	March	27th	6:30 PM	8:00 PM	Kingston	Karana	KSC-2
	Saturday	March	28th	2:30 PM	4:00 PM	Hawks	Devon	SPC
	Bye	Cavaliers						
<b>6</b>	Saturday	April	4th	1:00 PM	2:30 PM	Devon	Arrows	SBSC
	Saturday	April	4th	2:30 PM	4:00 PM	Hawks	Cripps	S-DOME-1
	Saturday	April	4th	2:30 PM	4:00 PM	Cavaliers	Karana	S-DOME-2
	Bye	Kingston						
<b>7</b>	Sunday	April	5th	12:00 PM	1:30 PM	Devon	Kingston	SBSC
	Sunday	April	5th	9:30 AM	11:00 AM	Cavaliers	Cripps	S-DOME-1
	Sunday	April	5th	9:30 AM	11:00 AM	Hawks	Karana	S-DOME-2
	Bye	Arrows						
<b>8</b>	Saturday	May	2nd	2:30 PM	4:00 PM	Hawks	Arrows	S-DOME-2
	Saturday	May	2nd	2:30 PM	4:00 PM	Cavaliers	Kingston	S-DOME-1
	Saturday	May	2nd	1:00 PM	2:30 PM	Devon	Cripps	SBSC
	Bye	Karana						
<b>9</b>	Sunday	May	3rd	9:30 AM	11:00 AM	Hawks	Kingston	S-DOME-1
	Sunday	May	3rd	9:30 AM	11:00 AM	Cavaliers	Arrows	S-DOME-2
	Sunday	May	3rd	11:30 AM	1:00 PM	Devon	Karana	DCC
	Bye	Cripps						
<b>10</b>	Friday	May	8th	6:30 PM	8:00 PM	Kingston	Arrows	KSC-1
	Friday	May	8th	6:30 PM	8:00 PM	Karana	Cripps	HNSC-1
	Friday	May	8th	6:30 PM	8:00 PM	Hawks	Cavaliers	S-DOME-1
	Bye	Devon						



	DAY	MONTH	DATE	TIME	TIME	HOME	AWAY	VENUE
<b>11</b>	Friday	May	15th	6:30 PM	8:00 PM	Karana	Arrows	KSC-2
	Friday	May	15th	6:30 PM	8:00 PM	Kingston	Cripps	KSC-1
	Saturday	May	16th	2:30 PM	4:00 PM	Cavaliers	Devon	S-DOME-1
	Bye	Hawks						
<b>12</b>	Friday	May	22nd	6:30 PM	8:00 PM	Cripps	Arrows	HNSC - 1
	Friday	May	22nd	6:30 PM	8:00 PM	Karana	Kingston	HNSC - 2
	Saturday	May	23rd	3:30 PM	5:00 PM	Devon	Hawks	SBSC
	Bye	Cavaliers						
<b>13</b>	Saturday	May	30th	4:00 PM	5:30 PM	Kingston	Devon	KSC-2
	Saturday	May	30th	4:00 PM	5:30 PM	Cripps	Hawks	KSC-1
	Saturday	May	30th	7:00 PM	8:30 PM	Karana	Cavaliers	KSC-1
	Bye	Arrows						
<b>14</b>	Sunday	May	31st	9:30 AM	11:00 AM	Arrows	Devon	HNSC-2
	Sunday	May	31st	12:30 PM	2:00 PM	Cripps	Cavaliers	HNSC-1
	Sunday	May	31st	9:30 AM	11:00 AM	Karana	Hawks	HNSC-1
	Bye	Kingston						
<b>15</b>	Saturday	June	13th	2:30 PM	4:00 PM	Hawks	Arrows	S-DOME-1
	Saturday	June	13th	2:30 PM	4:00 PM	Cavaliers	Kingston	S-DOME-2
	Saturday	June	13th	1:00 PM	2:30 PM	Devon	Karana	SBSC
	Bye	Cripps						
<b>16</b>	Sunday	June	14th	9:30 AM	11:00 AM	Hawks	Kingston	S-DOME-2
	Sunday	June	14th	9:30 AM	11:00 AM	Cavaliers	Arrows	S-DOME-1
	Sunday	June	14th	12:00 PM	1:30 PM	Devon	Cripps	SBSC
	Bye	Karana						
<b>17</b>	Friday	June	19th	6:30 PM	8:00 PM	Arrows	Kingston	HNSC - 1
	Friday	June	19th	6:30 PM	8:00 PM	Cripps	Karana	HNSC - 2
	Friday	June	19th	6:30 PM	8:00 PM	Hawks	Cavaliers	S-DOME-1
	Bye	Devon						
<b>18</b>	Friday	June	26th	6:30 PM	8:00 PM	Arrows	Karana	KSC-1
	Friday	June	26th	6:30 PM	8:00 PM	Cripps	Kingston	KSC-2
	Saturday	June	27th	2:30 PM	4:00 PM	Cavaliers	Devon	BBCS
	Bye	Hawks						
<b>19</b>	Thursday	July	2nd	6:30 PM	8:00 PM	Arrows	Cripps	HNSC-1
	Friday	July	3rd	6:30 PM	8:00 PM	Kingston	Karana	KSC-1
	Saturday	July	4th	2:30 PM	4:00 PM	Devon	Hawks	SBSC
	Bye	Cavaliers						
<b>20</b>	Saturday	July	11th	2:30 PM	4:00 PM	Kingston	Devon	KSC-1
	Saturday	July	11th	2:30 PM	4:00 PM	Cripps	Hawks	KSC-2
	Saturday	July	11th	11:30 AM	1:00 PM	Karana	Cavaliers	KSC-1
	Bye	Arrows						
<b>21</b>	Sunday	July	12th	9:30 AM	11:00 AM	Arrows	Devon	HNSC-2
	Sunday	July	12th	9:30 AM	11:00 AM	Cripps	Cavaliers	HNSC-1
	Sunday	July	12th	12:30 PM	2:00 PM	Karana	Hawks	HNSC-1
	Bye	Kingston						

# 33 YEARS OF THE TASMANIAN NETBALL LEAGUE

## Premiers Open

2019	Cavaliers
2018	Northern Hawks
2017	AYC-Friends Arrows
2016	AYC-Friends Arrows
2015	AYC-Friends Arrows
2014	Cripps Waratah
2013	Cavaliers
2012	AYC-Friends Arrows
2011	AYC-Friends Arrows
2010	Cavaliers
2009	Cavaliers
2008	Cripps Waratah
2007	Cavaliers
2006	Cavaliers
2005	Cripps Waratah
2004	Cripps Waratah
2003	Cripps Waratah
2002	Cavaliers
2001	Cripps Waratah
2000	Cripps Waratah
1999	OHA
1998	Cavaliers
1997	Devon
1996	Dominant Northerners
1995	Kilburn
1994	Devon
1993	Cripps
1992	Cripps
1991	Kilburn (A) / Karana (B)
1990	Burnie
1989	South

## Premiers U/19s

2019	Cavaliers
2018	Cavaliers
2017	Kingston Blues
2016	Kingston Blues
2015	Cavaliers
2014	Cavaliers
2013	Cavaliers
2012	Cavaliers
2011	Cavaliers
2010	Karana
2009	Karana
2008	Devon
2007	Kingston Blues
2006	Cavaliers
2005	Cavaliers
2004	Karana
2003	DJ Palena
2002	Devon
2001	BP Palena
2000	BP Palena
1999	BP Palena
1998	Northern Saints
1997	Cavaliers
1996	Cavaliers
1995	Dominant Northerners
1994	Devon
1993	Devon
1992	
1991	
1990	South
1989	

## PRINCIPLE PARTNERS

---



## MAJOR PARTNERS

---



## SUPPORT PARTNERS

---



## MEDIA PARTNERS

---



## CHARITY PARTNER

---





HELPING YOU

# REACH YOUR GOALS

WITH RACT INSURANCE

Proudly supporting the  
Tasmanian Netball League



In branch | [ract.com.au](http://ract.com.au) | 13 27 22 |    

INSURANCE by

